

Products: CMU

CMUCopy

Transferring CMU Hardcopy to PC using the IEEE bus

Application Note

This Application Note describes a program for transferring hardcopies of the screen from a CMU Radiocommunication Tester to a PC, connected via the IEEE bus.



Contents

1	Overview	2
2	Software Features.....	2
3	Hardware and Software Requirements.....	3
	Hardware Requirements.....	3
	Software Requirements	3
4	Preparing the CMU	3
5	Connecting the Computer and the Instrument.....	3
	Connecting the instruments	3
6	Installing the Software.....	4
	Presettings and Installation.....	4
	Instrument Parameters	4
7	Operating the Software	4
	Saving screenshots on the CMU	4
	Transferring Hardcopies to the PC	4
8	Additional Information	5

1 Overview

With this program you can copy hardcopies saved on a CMU to your PC using the IEEE bus.

The program can also delete stored hardcopies files from the CMU.

Note: *This software supports only the CMU Radiocommunication Tester. If you want to make screenshots from other R&S instruments, please refer to Application Note 1MA25 (GPIBShot).*

2 Software Features

- Display all available hardcopies from the CMU connected via the IEEE bus at your PC.
- Copy hardcopies to your PC.
- Delete hardcopies from the CMU.

3 Hardware and Software Requirements

Hardware Requirements

The software runs on a PC with the following features:

- CPU: 486, Pentium or better
- RAM: 16 Mbyte or more
- Monitor: VGA colour monitor
- IEEE bus: IEC/IEEE-bus interface Rohde & Schwarz IEEE 488.2 bus interface PS-B4, 1006.6207.04 or National Instruments AT-GPIB/TNT

Software Requirements

- 32 bit operating system
(Windows 95/98, Windows NT 4.0, Windows 2000, Windows ME)
- GPIB (IEEE-bus) driver installed

4 Preparing the CMU

If you are using a CMU firmware version earlier than 3.0, you need to modify the configuration file. With newer versions, the CMU is already configured.

Modify the configuration file:

1. Connect a keyboard to the CMU and switch via <Alt>+<F4> to DOS (you might have to reboot).
2. Select the directory C:\CMU.
3. For each installed firmware, there is a directory.
Change to the directory of the firmware you want to make the hardcopy function via the IEEE bus available (z.B. BIN_V2.15).
4. Change directory to \BASE\BSW\EXE.
5. Execute "EDIT BASE.INI" to open the INI-file in edit mode.
6. Go to the bottom of the file.
7. Within the tag [FILER] there are 3 entries which have to be changed:
 - @CONSTDIRECTORYINTERNALPRINT -> change to "\"
 - @INTERNALDRIVE -> change to "C"
 - @CONSTDIRECTORYINTERNAL -> change to "\"
8. Close the editor and restart the instrument.

5 Connecting the Computer and the Instrument

Connecting the instruments

Connect the CMU and the PC via an IEEE bus cable.

6 Installing the Software

Presettings and Installation

The Microsoft Installer is used to install the CMU hardcopy utility.

Under Windows 2000, or if you have already installed software with the Microsoft Installer, then the Microsoft Installer is already installed. You can start SETUP.MSI directly.

To Install MS Installer:

- under Windows 95: run InstMSIA. EXE
- under Windows 98 and Windows NT 4.0: run InstMSIW.EXE

Then start SETUP.MSI to install the program.

During installation, program files are copied to a directory of your choice. An icon is created on your computer's desktop for running the utility.

Instrument Parameters

The program does not modify any parameters on the instrument. Use any settings with which you wish to create the screenshot.

7 Operating the Software

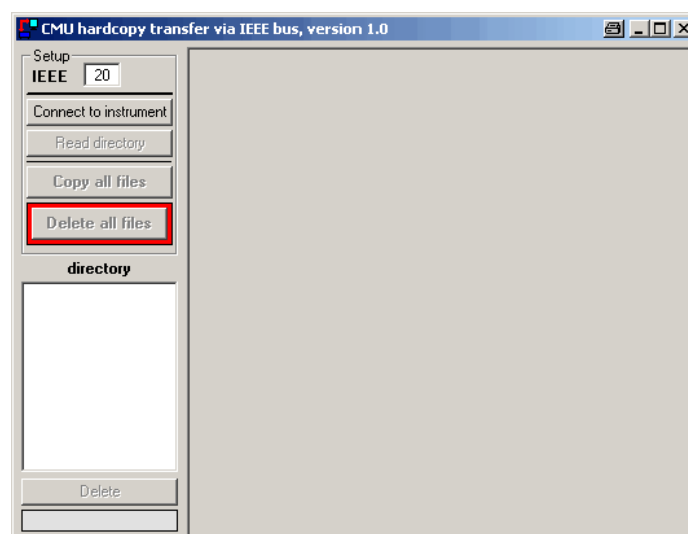
Saving screenshots on the CMU

The program can only transfer hardcopies which are already saved on the CMU.

To store hardcopies on the CMU, select "Internal WMF" as "DESTINATION" when you press the PRINT key and save the screenshots.

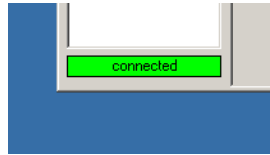
Transferring Hardcopies to the PC

To transfer the hardcopies on the PC, start this program:



1MA45 - CMU hardcopy transfer via IEEE bus

1. Enter the IEEE bus address of the CMU.
2. Press "**Connect to instrument**". A status indicator will appear at the bottom of the window:



3. Press "**Read directory**": All .WMF-files are listed.
4. By clicking on a file in the list, this file is transferred via the IEEE bus, displayed on the PC, copied to the folder the program is running in and copied to the clipboard. You can easily paste the image via <CTRL>+<V> to any application.
5. Selecting a file and pressing deletes the selected file. The file will also be deleted when you press "**DELETE**".
6. "**Copy all files**" copies all files to the folder the program is running in.
7. "**Delete all files**" deletes all files.

8 Additional Information

Please contact TM-Applications@rsd.rohde-schwarz.com for comments and further suggestions.



ROHDE & SCHWARZ GmbH & Co. KG · Mühldorfstraße 15 · D-81671 München · P.O.B 80 14 69 · D-81614 München ·
Telephone +49 89 4129 -0 · Fax +49 89 4129 - 13777 · Internet: <http://www.rohde-schwarz.com>

This application note and the supplied programs may only be used subject to the conditions of use set forth in the download area of the Rohde & Schwarz website.